

GEOCHEMICAL ATLAS  
OF CYPRUS



ΓΕΩΧΗΜΙΚΟΣ ΑΤΛΑΝΤΑΣ  
ΚΥΠΡΟΥ



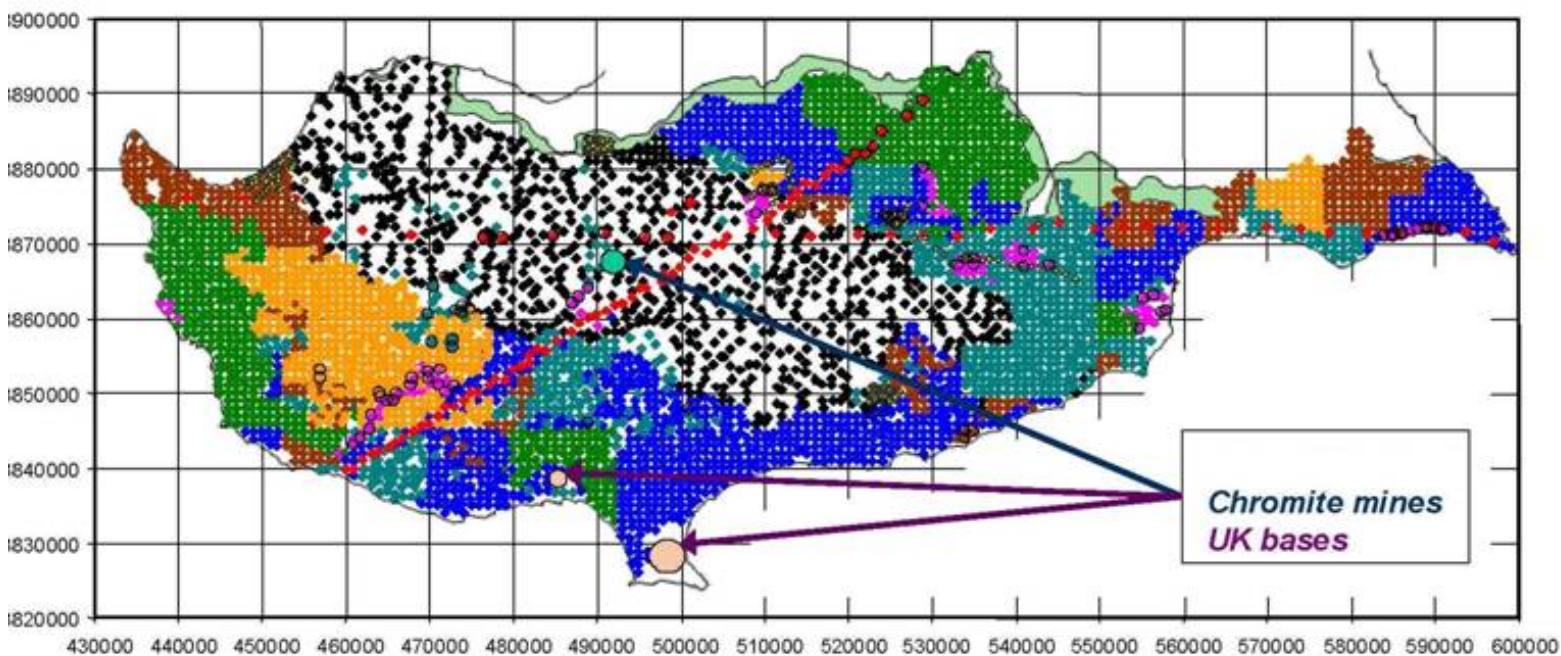
**THE UNIVERSITY OF  
NEW SOUTH WALES**

GEOCHEMICAL ATLAS  
OF CYPRUS

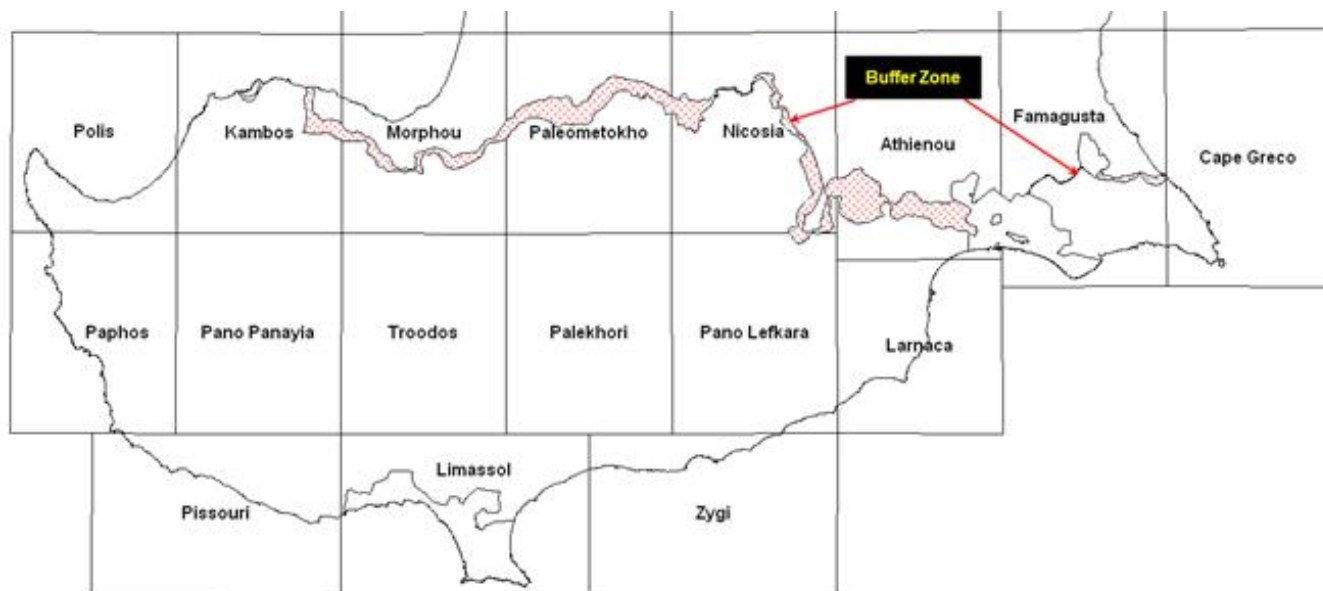


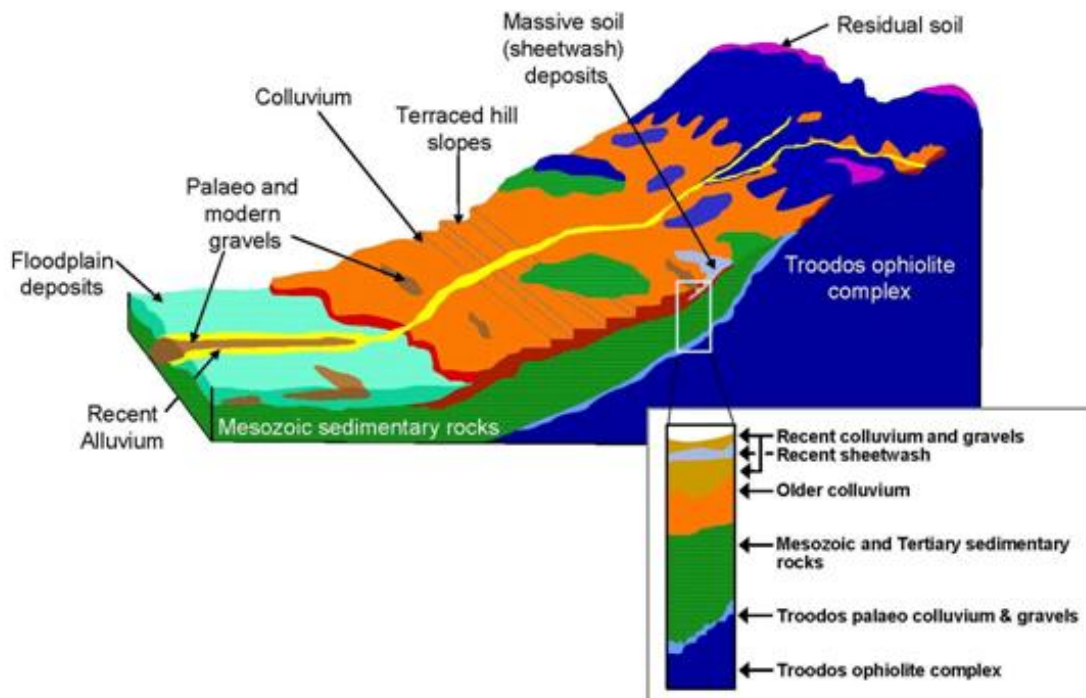
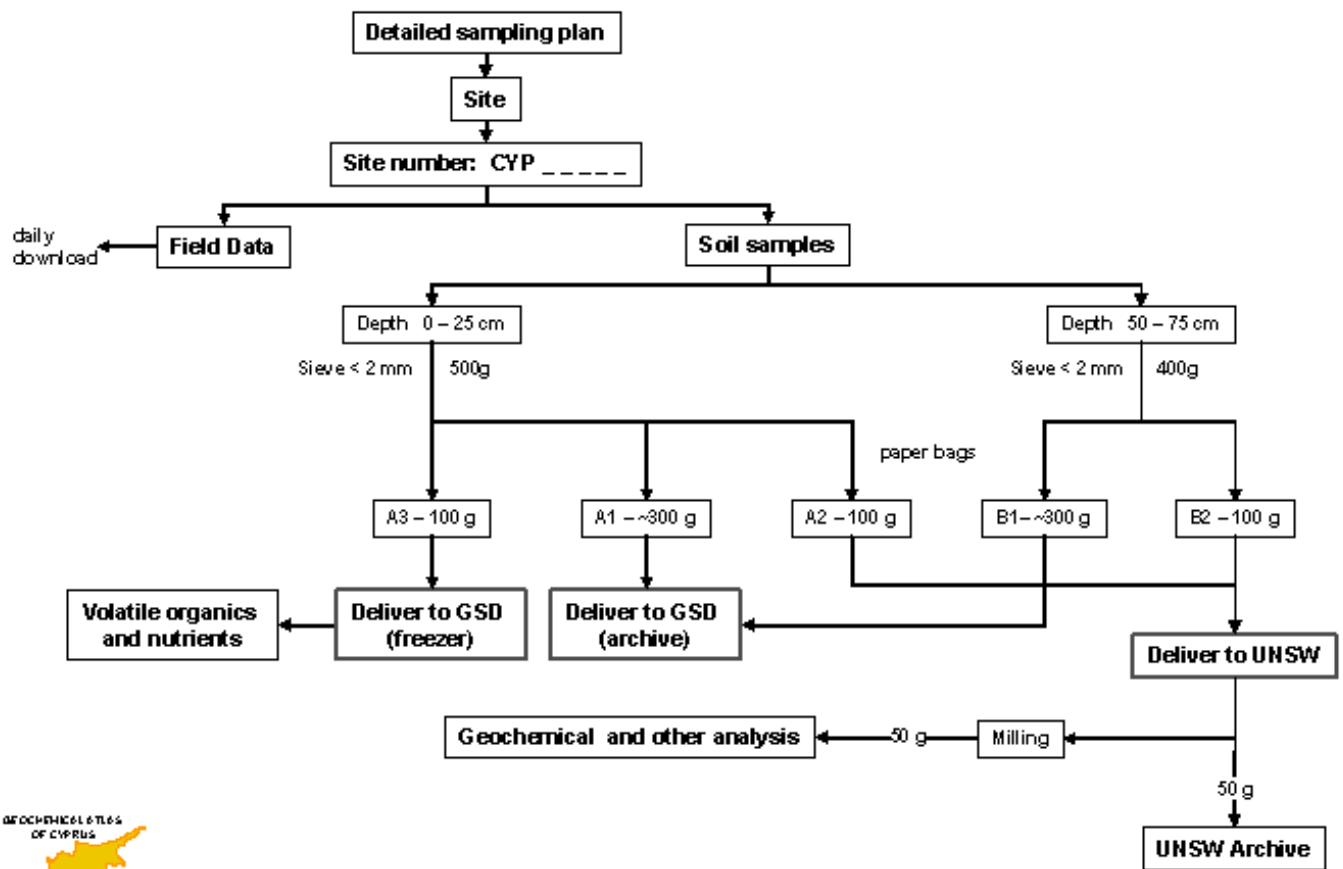
ΓΕΩΧΗΜΙΚΟΣ ΑΤΛΑΝΤΑΣ  
ΚΥΠΡΟΥ

# Sampling



- |           |            |                          |
|-----------|------------|--------------------------|
| ◆ May '06 | ◆ Nov '06  | ◆ Troodos                |
| ◆ Sep '06 | ◆ Dec '06  | ◆ Orientation sites      |
| ◆ Oct '06 | ◆ Jan '07+ | ◆ Mine and special sites |
|           |            | ○ Duplicate sites        |





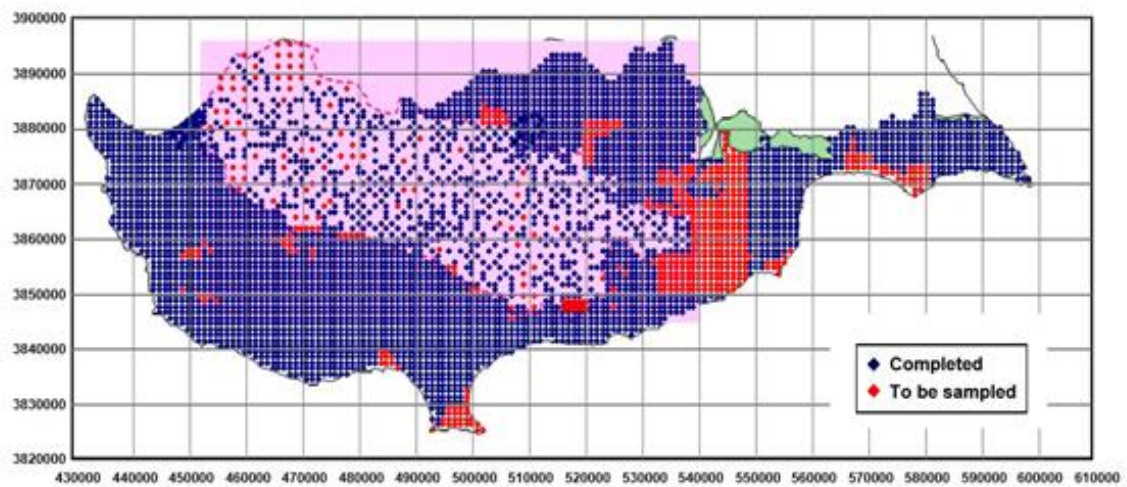
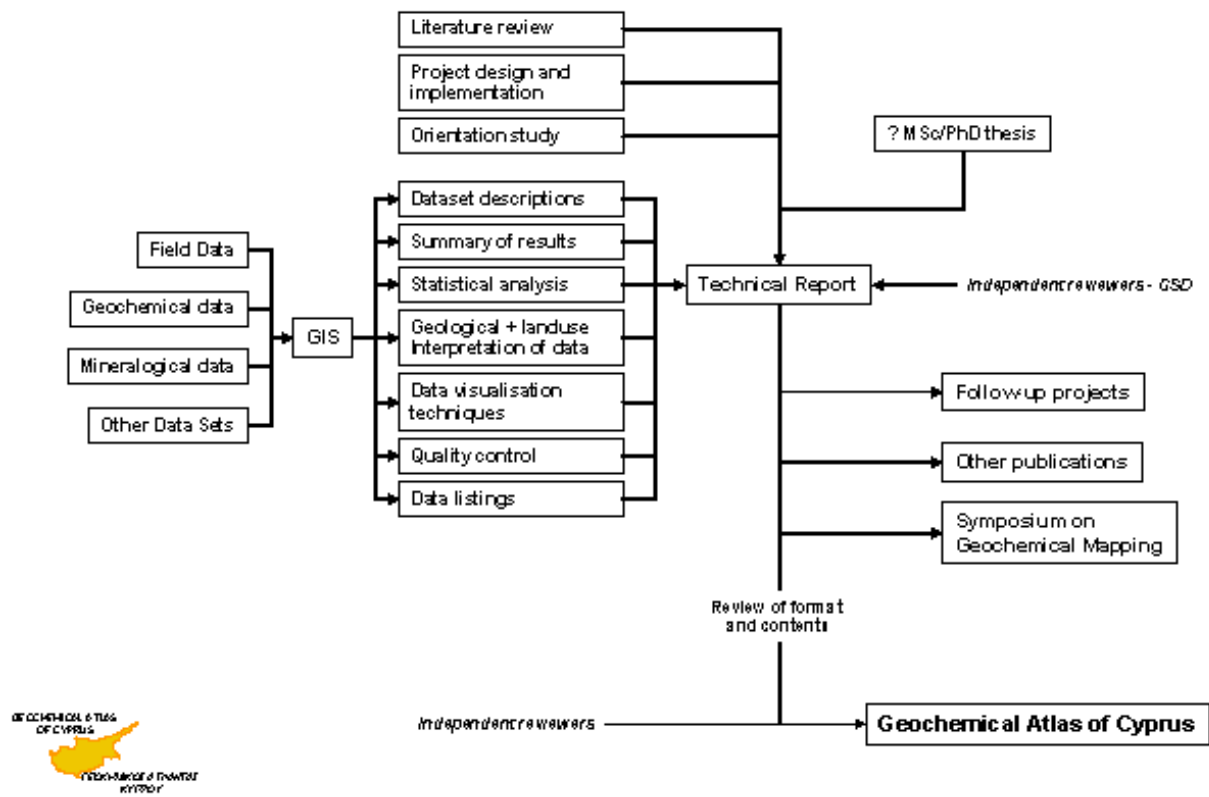
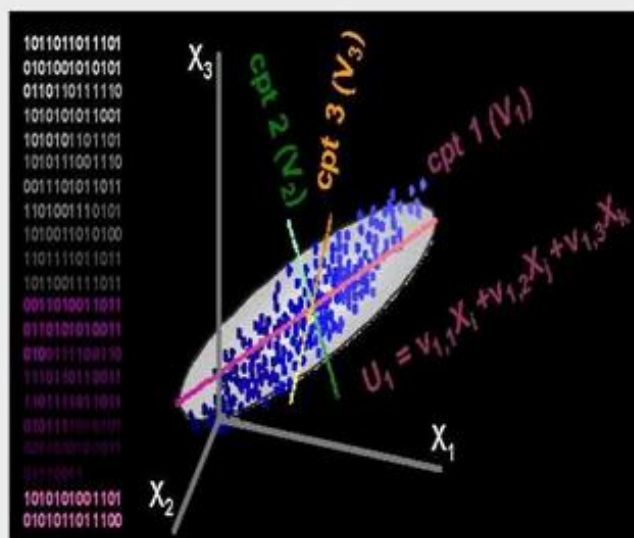


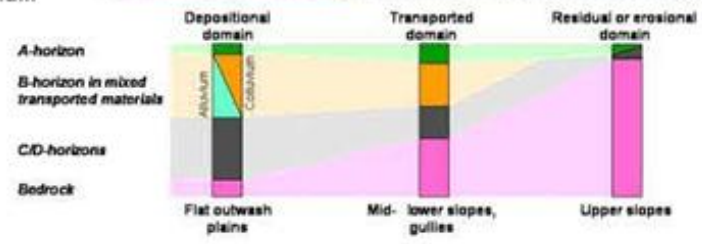
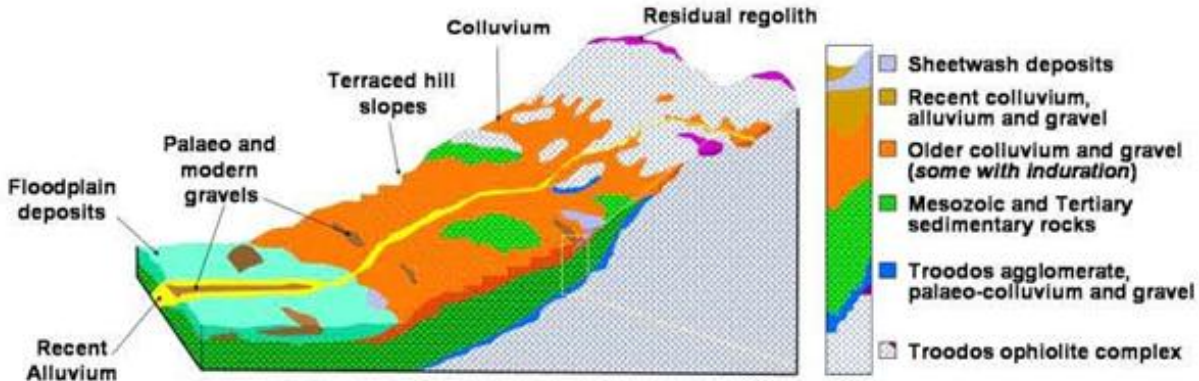
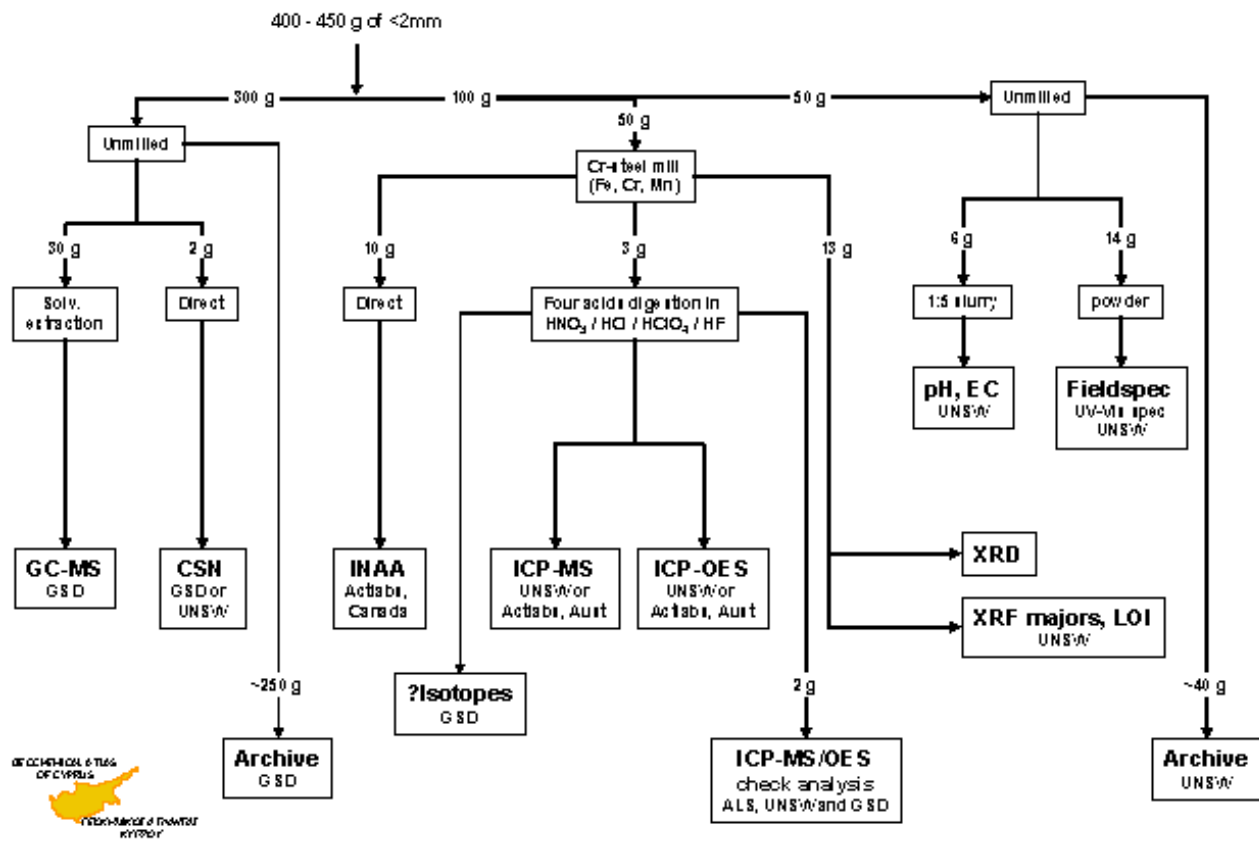
Figure 22. Completed and planned sampling sites.



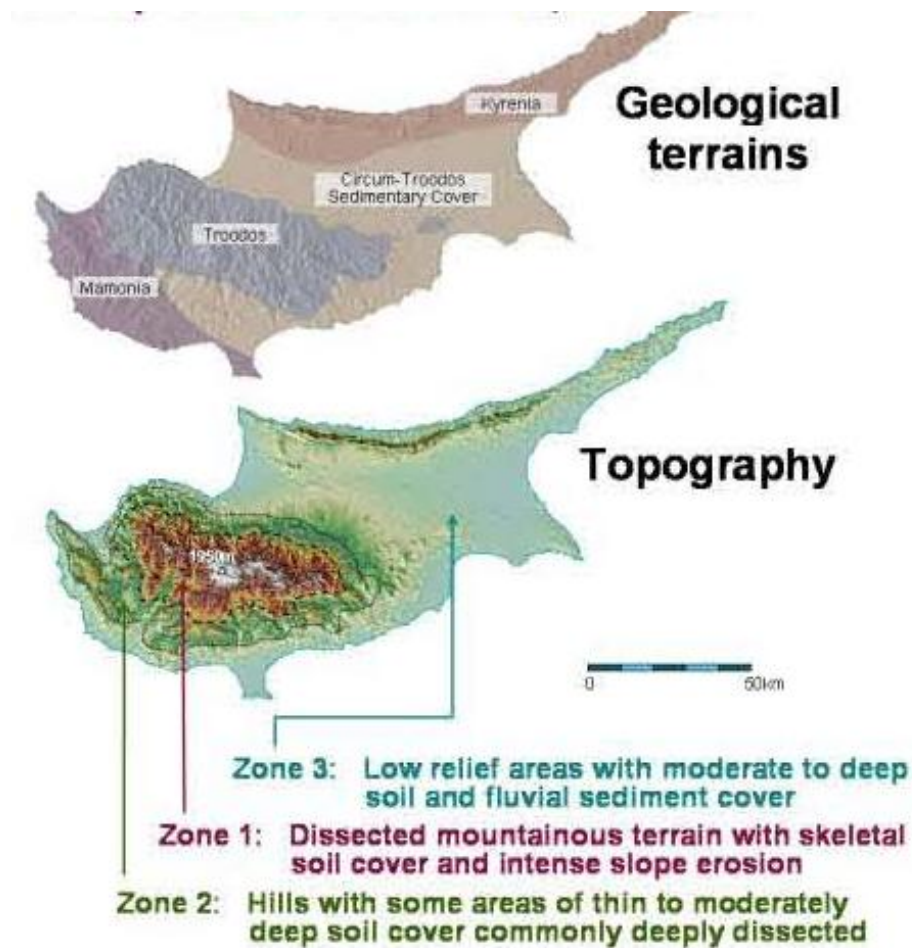
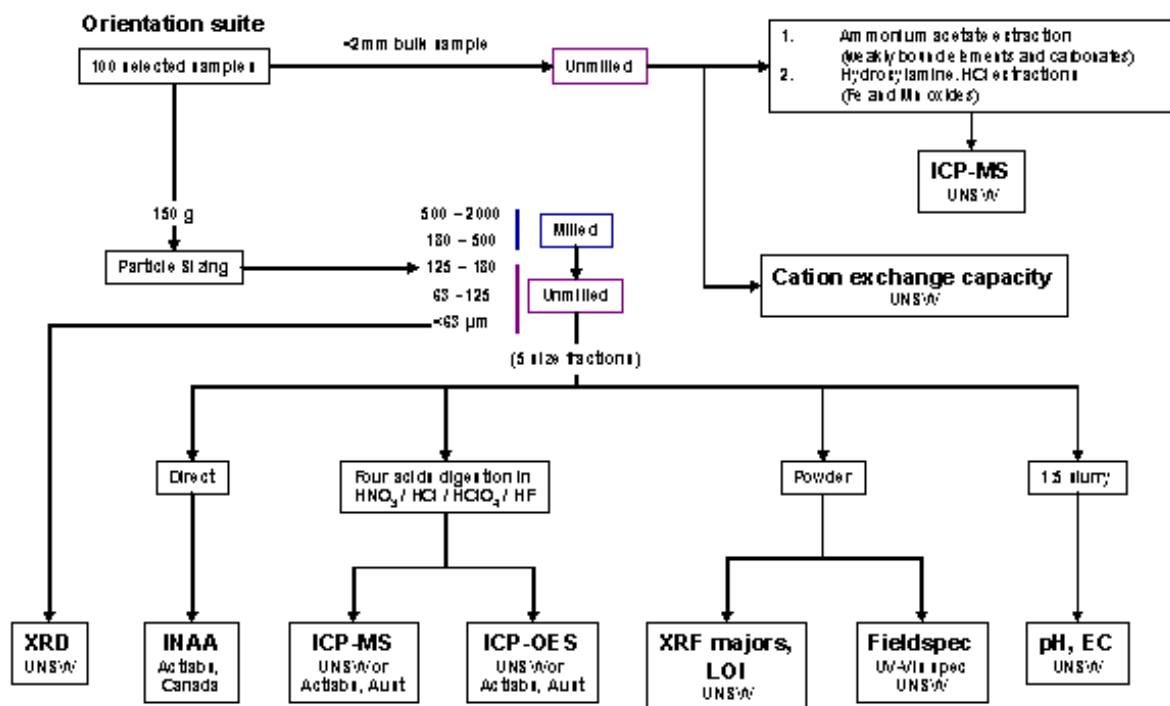


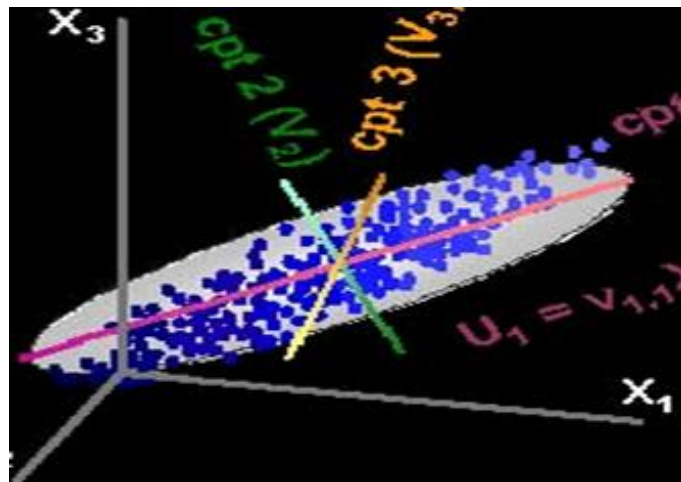
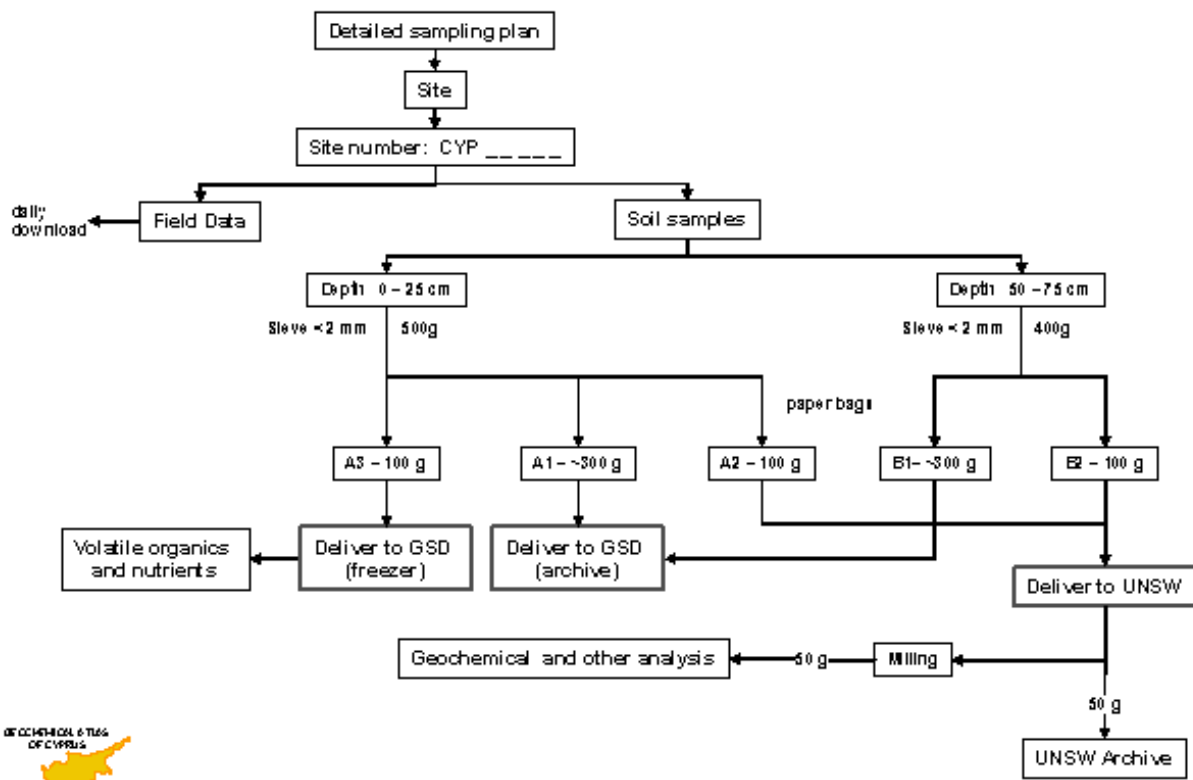
# Statistical Analysis of Geochemical Data





**A regolith - landscape model for Cyprus**





**UNSW**  
THE UNIVERSITY OF NEW SOUTH WALES

**Our World of Solutions**